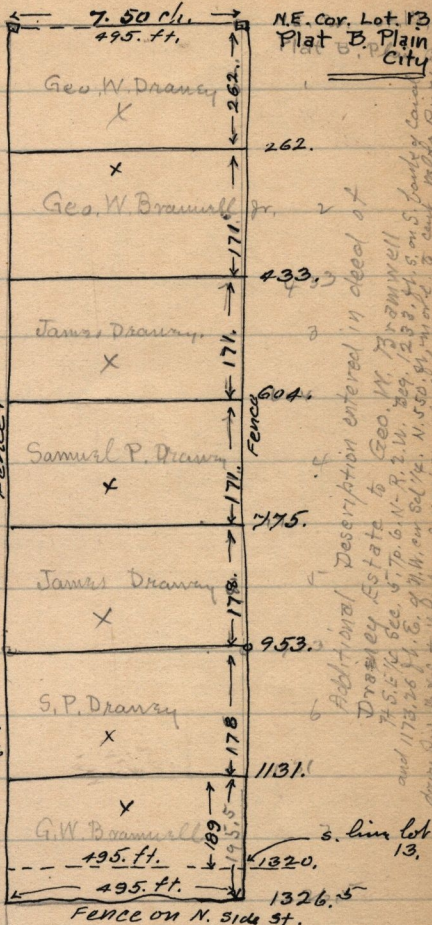


Dec. 16-1898;

Survey made for  
Draney Bros. at  
Plain City - Being  
subdivision of Lot 13  
Plat B. Plain City Surv.



-446  
 to P. Draney to Arminda  
 Blench - Pt S. 8 1/4 Sec. 5  
 T. 6 N - R. 2. W. Bsq.  
 S. E. cor of 1/4 W. 89 3/4 ch.  
 N 10.03 ch N 80° 18' W. 37 1/2 ch  
 N 3° 27' E 10.74 ch to  
 Cent. Water Riv. - S. E. to  
 pt on E. line of 1/4 Sec.  
 4.50 ch N 5° 57' W. of bsq.  
 S 5° 57' E. 4.50 ch to bsq.

Descriptions entered in deeds.  
 of Draney tracts in Sec 5. T. 6.  
 N - R. 2. W.

to Geo. W. Bramwell Jr. Pt. S. 6 1/4 Sec. 5  
 Sec. 5. T. 6 N - R. 2. W. Bsq. 1233 ft.  
 S. on S. bank of Canal. 7 1/2 Sec. 5. 5208.75  
 ft. W. cor. S. E. 1/4 Sec. 5. 5208.75  
 ft. S. to pt 260.42 ft. S + 1305.26  
 ft. E. of bsq. N 260.42 ft. W 1305.26  
 ft. to bsq.

to Samuel P. Draney. Bsq. 1441.75  
 ft. S + 132. ft. W. of N. W. cor. S. E. 1/4  
 Sec. 5. S 204.75 ft. W - S. E. to pt.  
 312.09 ft. S + 1305.26 ft. E. of bsq  
 N 260.42 ft. N. W. in straight  
 line to bsq.

to Geo. W. Draney Bsq. 1650.5 ft.  
 S + 132. ft. W. of N. W. cor. S. E. 1/4  
 S 208.75 ft. - S. E. in straight line to point 363.76 ft. S and 1305.26  
 E. of bsq. - N 260.42 ft. N. W. in straight line to bsq.

to James Draney. Bsq. 1859.25 ft. S + 132. ft. W. of N. W. cor. S. E. 1/4  
 Sec. 5. 5208.75 ft. - S 81° 00' E. 1321.6 ft. N 260.42 ft. - N. W.

along a straight line to the place of bsq.

Each deed also includes part of the above lot 13. Plat B.  
 Plain City.

Additional Description entered in deed of  
 Draney Estate to Geo. W. Bramwell  
 7 1/2 Sec. 5. T. 6 N - R. 2. W. Bsq. 1233 ft. S. on S. bank of Canal  
 and 178.26 ft. E. of N. W. cor. S. E. 1/4 Sec. 5. 5208.75 ft. S. to pt  
 260.42 ft. S + 1305.26 ft. E. of bsq. N 260.42 ft. W 1305.26  
 ft. to bsq.